

**Oxford Mayor and Council
Work Session
Monday, April 20, 2026 – 6:30 P.M.
Oxford City Hall
110 W. Clark Street, Oxford, Georgia
Agenda**

1. **Mayor's Announcements:**
2. **Committee Reports:** The Trees, Parks and Recreation Board, Planning Commission, Downtown Development Authority, and the Sustainability Committee.
3. ***Consideration of Next Steps for the United Methodist Church Shrine Signage:** A citizen has inquired about having this sign reinstalled in the City. Should the wording be changed? Do we need to speak to the UMC? Staff has inquired with the Georgia Historical Society about pricing to recast the sign.
4. **Intergovernmental Agreement with Newton County Regarding Municipal Court Services for Animal Control :** On May 5, 2025, Oxford passed a resolution after a request from Newton County for all municipalities to update their animal control ordinances to provide uniformity across jurisdictions and to ensure compliance with any new state requirements. This IGA is an extension of that agreement in order to place any Newton County Animal Control cases which originate in Oxford to be handled by the Newton County Magistrate Court and for all fines/fees associated with these cases to be retained by Newton County.
5. ***City of Oxford Resolution Supporting the Newton County Solid Waste Management Plan (SWMP) 2026-2035:** Mr. Matthew Dolan, Director of Solid Waste with the Newton County Solid Waste Management Authority will be at the meeting to answer any questions or concerns.
6. ***Discussion of Next Steps for Fixing the Sunken Bricks on the Coke Street Trail:** Please see the attached email outlining the potential cost of replacing the concrete panels. Staff should have a count on how many bricks have sunk by the meeting.
7. ***Fee for the Use of the Town Green:** Rental Fees for the Town Green are \$500 per day with the exception that Non-Profits and Government Entities are exempt from fees. Do we want this exemption to apply to out of city no-profits? Is there any need to revamp the fee schedule as a whole?
8. **General Discussion on Next Steps for the City Solar Development Project:** Mayor Eady will brief the Council on how this project is shaping up and what our next steps should be.
9. ***Other Business:** Questions or concerns on the (009a) City Manager and (009b) Police Chief Update.
10. **Work Session Meeting Review:** The Mayor will review all the items discussed during the meeting.
11. **Executive Session:** An Executive Session could potentially be held for Land Acquisition/Disposition, Addressing Pending or Potential Litigation, and/or Personnel.

*Attachments

Individuals with disabilities who require certain accommodation to allow them to observe and/or participate in this meeting, or who have questions regarding the accessibility of the meeting, are requested to contact City Hall at 770-786-7004 to allow the City to make reasonable accommodation for your concerns.



TOWN OF OXFORD, GEORGIA HISTORIC SHRINE OF THE UNITED METHODIST CHURCH

In 1836 the Georgia Methodist Conference founded Emory College, named in honor of Bishop John Emory who had died the year before. Early in 1837, 1452 acres of land were purchased with 330 acres being set aside for the college town which was the first collegiate community of its kind in American Methodism.

The town, named Oxford in honor of the Wesleys' university, was designed by Edward Lloyd Thomas, a Methodist minister and surveyor. The original streets were all named for notable Methodists. More than 20 nineteenth century buildings and sites related to Methodism are still standing and may be seen on a walking tour. The oldest house in Oxford, the Alexander Means House, was built by a Virginian in the 1820's.

Emory College was moved to Atlanta in 1919 to become the College of Arts and Sciences of Emory University which was founded in 1915 by the Methodist Episcopal Church, South. The junior college, established in 1929, is called Oxford College of Emory University and continues to operate on the original campus.

The whole town, including Oxford College, was designated as Shrine number 16 by the General Conference in 1972.



TOWN OF OXFORD, GEORGIA HISTORIC SHRINE OF THE UNITED METHODIST CHURCH

Many prominent southern Methodists have been associated with the town and the college. Oxford was the longtime residence of Bishop James O. Andrew, whose ownership of his wife's inherited slave girl, Kitty, precipitated the division between northern and southern Methodism in 1844. Kitty's cottage now stands beside the historic Old Church, built in 1841. From this sanctuary in 1880 Bishop Atticus G. Haygood, then president of Emory College, delivered a Thanksgiving Day sermon titled: "The New South: Gratitude, Amendment, Hope", which marked a turning point in race relations and social reform in southern Methodism and in the South. Allen Memorial Church, built in 1910, was named in memory of Young J. Allen, an 1858 Emory graduate who became the first Methodist missionary to China, serving from 1860 to 1907.

Oxford Historical Cemetery was a part of the original plan of the town. It is referred to as "The Westminster of Georgia Methodism". Bishops James O. Andrew, Atticus G. Haygood, and Warren A. Candler as well as eight Emory College presidents and many professors and ministers are buried here.

SHRINE NO. 16 GENERAL CONFERENCE,
THE UNITED METHODIST CHURCH 1972

**NEWTON COUNTY – CITY OF OXFORD
INTERGOVERNMENTAL AGREEMENT REGARDING MUNICIPAL COURT
SERVICES FOR ANIMAL CONTROL**

This Intergovernmental Agreement (“IGA”) is entered into as of the _____ day of _____, 2026, by and between Newton County, Georgia, a political subdivision of the State of Georgia, by and through its duly authorized governing authority, the Board of Commissioners of Newton County, Georgia (hereinafter referred to as “Newton County”) and the City of Oxford, a municipal corporation and through its duly authorized governing authority, the City Council of Oxford, Georgia (hereinafter referred to as “Oxford”). The purpose of this IGA is to memorialize the service provider that will provide certain municipal court services as authorized in O.C.G.A. § 15-10-150 *et seq.*

WHEREAS, the Parties are authorized by Art. IX, Sec. III, Par. I of the Constitution of the State of Georgia to enter into this IGA.

WHEREAS, in 2019, as part of its Service Delivery Strategy, Newton County and Oxford entered into an Intergovernmental Agreement regarding the provision of animal control and animal sheltering services (“Animal Control Agreement”); and

WHEREAS, O.C.G.A. § 36-32-1 and Oxford’s City Charter permits the city to establish a municipal court to have jurisdiction over the violation of municipal ordinances; and

WHEREAS, Newton County staff, per the Animal Control Agreement, issues citations for violations of Oxford’s animal control ordinance within the municipal limits of Oxford; and

WHEREAS, the prosecution of citations related to Oxford’s animal control ordinance may require testimony and/or the appearance of Newton County staff in court; and

WHEREAS, per the Animal Control Agreement, any fines received for violations of Oxford’s animal control ordinance are to be remitted to Newton County on a monthly basis as payment for animal control services; and

WHEREAS, Newton County staff also provides animal control services and issues citations on behalf of all other municipalities wholly or partially within Newton County; and

WHEREAS, Newton County and Oxford desire to establish an efficient and cooperative method to handle the prosecution of violations of Oxford's animal control ordinance; and

WHEREAS, pursuant to O.C.G.A. § 15-10-150, Newton County and Oxford are authorized to enter into an IGA for the Newton County Magistrate Court to provide municipal court services; and

WHEREAS, pursuant to O.C.G.A. § 15-10-151, and with the approval of the Newton County Chief Magistrate Judge, such an agreement would allow Newton County to furnish municipal court services through the officers, employees, and facilities of its Magistrate Court, and

WHEREAS, for violations of animal control ordinances, consolidating prosecutions into one court for all municipalities that utilize Newton County for animal control services would benefit all citizens of Newton County.

NOW THEREFORE, it is agreed by and between Newton County and Oxford as follows:

1. The Newton County Magistrate Court shall be the entity to accept and process citations, review and conduct any hearings or trials related to violations of Oxford's animal control ordinance that occur within the corporate limits of Oxford.
2. Actions which the Magistrate Court is not empowered to handle will be returned or forwarded to the appropriate court.

3. Any fines received for violations of Oxford's animal control ordinance will be processed as usual by the Newton County Magistrate Court and retained by Newton County.
4. Pursuant to O.C.G.A. § 15-10-152, the judges of the Newton County Magistrate Court shall have full authority under this IGA to act as municipal judges for Oxford and all other officers and personnel of the Magistrate Court shall have full authority to act as officers and personnel of a municipal court for Oxford.
5. This IGA shall continue in full force and effect for one (1) year and shall be automatically renewed for successive one (1) year terms unless otherwise terminated. This IGA may be terminated by convenience by either Newton County or Oxford with sixty (60) days written notice to the appropriate governing authority as well as to the Magistrate Court. Furthermore, pursuant to O.C.G.A. § 15-10-151, this IGA shall not extend beyond the term of the undersigned Chief Magistrate Judge.
6. This IGA may be modified at any time during its term by mutual written consent of Newton County, Oxford, and the Chief Magistrate Judge of Newton County.
7. This IGA may be executed in one or more counterparts, each of which shall constitute the original.
8. Each of the individuals who executes this IGA agrees and represents that he is authorized to execute this IGA on behalf of the respective government and further agrees and represents that this IGA has been duly passed upon by the respective government and spread upon its minutes.

IN WITNESS WHEREOF, Newton County and Oxford have caused this IGA to be executed under seal as of the date first written above.

NEWTON COUNTY, GEORGIA

Linda Hays
Interim Chair, Board of Commissioners

Attest: _____
Clerk to Commission

Date: _____

CITY OF OXFORD, GEORGIA

David Eady
Mayor

Attest: _____
City Clerk

Date: _____

APPROVED BY:

Melanie Bell
Chief Judge of the Newton County Magistrate Court

Date: _____

Resolution

ADOPTION OF A SOLID WASTE MANAGEMENT PLAN

WHEREAS, the Georgia Comprehensive Solid Waste Management Act of 1990 as amended requires all local governments to prepare a solid waste management plan and adopt the plan, plan updates, and amendments by ordinance or resolution; and

WHEREAS, Chapter 8 of Title 12 of the Official Code of Georgia Annotated, as amended by Act No. 76, Georgia Laws 2011 was passed and signed into law during the 2011 session of the Georgia General Assembly authorizing counties and cities to establish their own procedures and standards for drafting and updating their solid waste management plans; and

WHEREAS, Newton County and the Cities of Covington, Mansfield, Newborn, Oxford, and Porterdale have prepared a comprehensive Solid Waste Management Plan (the "Plan") dated 2026-2035 that, among other provisions:

- i. Demonstrates solid waste collection capabilities and disposal capacity;
- ii. Identifies the type and size of solid waste handling facilities within the entirety of Newton County; and
- iii. Identifies the sites which are not suitable for solid waste handling facilities based upon environmental and land use factors; and

WHEREAS, the City of Oxford relies upon the Newton County Lower River Road Landfill for solid waste generated within the planning area that is not recycled; and

WHEREAS, a public notice to adopt the Newton County and the Cities of Covington, Mansfield, Newborn, Oxford, and Porterdale Ten-Year Solid Waste Management Plan, 2026-2035 was published in The City of Oxford's Website at <https://www.oxfordgeorgia.org>.

BE IT FURTHER RESOLVED that the Mayor and City Council of the City of Oxford hereby approves and adopts the Plan.

IN WITNESS WHEREOF, this resolution has been duly adopted by the governing authority of Oxford, Georgia on the 4th of May, 2026.

David. S. Eady, Mayor

CERTIFICATION

I hereby certify that the foregoing is a true and correct copy of an original resolution duly adopted by the City of Oxford on the 4th day of May, 2026.

In witness whereof, I hereunto set my hand and affix the seal of the City of Oxford, this 4th day of May, 2026.

Stacey Mullen, Interim City Clerk

[*Affix Seal*]



*Leading Newton County
through responsible,
sustainable, innovative
waste management
#OneNewton*

205 Lower River Road
Covington, GA 30016
770-784-2015

Kent Campbell
Chairman

Linda Hanna
Vice Chairman

Stan Edwards
Commissioner
District 1 and
Treasurer

Linda Hays
Interim BOC Chairman

Andre Cooper
Interim Commissioner
District 3

Leigh Canada
Member

Phillip Wise
Member

Matt Dolan
Solid Waste Director

Laurie Riley
Secretary and
Keep Newton Beautiful
Manager

Honorable David Eady, Mayor
City of Oxford
110 W. Clark Street
Oxford, GA 30054

March 31, 2026

Dear Mayor Eady,

The Newton County Solid Waste Management Authority has updated our Multi-Jurisdictional Solid Waste Management Plan (SWMP). This document addresses the current and future solid waste needs in Newton County.

We also want to ensure the updated plan reflects the needs and priorities of our local government partners. As stakeholders, it is necessary that each municipal jurisdiction formally agrees with and adopts the SWMP.

We would like to submit the SWMP to the State along with your City's resolution by May 8, 2026. We hope this provides you and your staff with time to review and present to your council for adoption. If possible, let Director Matthew Dolan or me know which meeting date is scheduled so that we may attend and answer council members' questions.

On behalf of the Newton County Solid Waste Management Authority, I thank you in advance for your attention and cooperation as we work together providing efficient and sustainable solid waste management for our citizens.

Sincerely,

A handwritten signature in blue ink, appearing to be "Kent Campbell", is written over a light blue horizontal line.

Kent Campbell
Chairman

cc: Bill Andrew, City Manager; Stacy Mullen, Interim Clerk

Mission: To provide and oversee effective, environmentally and financially responsible trash collection, disposal, and recycling options for everyone in Newton County

NEWTON COUNTY AND THE CITIES OF
COVINGTON, MANSFIELD, NEWBORN, OXFORD, & PORTERDALE

DRAFT

TEN-YEAR SOLID WASTE MANAGEMENT PLAN
2026-2035

Newton County Board of Commissioners
Covington City Council
Mansfield Mayor and City Council
Newborn Town Council
Oxford City Council
Porterdale Mayor and City Council

| | | |
|---------------------------------------------------------|----------------------------------------------------------------------------------------|-----------|
| 5.2.1 | Waste Quantity and Characterization | 15 |
| 5.2.2 | Seasonal Variations in Waste Disposal | 16 |
| 5.2.1 | Assurance of 10-Year Capacity | 17 |
| 5.2.2 | Contingency Strategy | 17 |
| 5.3 | Assessment of Disposal | 17 |
| 5.4 | Needs and Goals | 18 |
| SECTION 6: LAND LIMITATION ELEMENT | | 18 |
| 6.1 | Lands Unsuitable for Solid Waste Facilities..... | 18 |
| 6.1.1 | Areas with Natural Environmental Limitations..... | 18 |
| 6.1.2 | Environmental Limitations in Local Zoning | 19 |
| 6.1.3 | Additional Environmental Limitations for All Solid Waste Facilities..... | 19 |
| 6.1.4 | Additional Environmental Limitations for Permit-by-Rule Facilities | 20 |
| 6.1.5 | State Solid Waste Handling Permit Facilities | 20 |
| 6.1.6 | Land Use Limitations | 21 |
| 6.2 | Local Procedures for Siting Solid Waste Facilities | 21 |
| 6.3 | Needs and Goals | 23 |
| SECTION 7: EDUCATION AND PUBLIC INVOLVEMENT..... | | 23 |
| 7.1 | Inventory Existing Public Education Programs and Public Involvement Opportunities..... | 23 |
| 7.2 | Assess Adequacy of Environmental Education Initiatives..... | 24 |
| 7.3 | Statement of Needs and Goals | 25 |
| SECTION 8: IMPLEMENTATION STRATEGY | | 25 |
| 8.1 | Summary of Goals and Needs | 25 |
| 8.2 | Implementation Strategy/Short-Term Work Program | 26 |

Exhibits

- Exhibit 1-1: Location Map of Newton County and its Municipalities
- Figure 3-1: Citizen Convenience & Recycling Center Locations
- Figure 5-1: Active Solid Waste Facilities
- Figure 6-1: Zoning Map
- Figure 6-2: Groundwater Recharge, Hydrology & Wetlands
- Figure 6-3: FEMA Special Flood Hazard Areas

SECTION 1: INTRODUCTION

1.1 Define Planning Area

This Ten-Year Solid Waste Management Plan (this “Plan”) addresses the management of solid waste, including collection, processing, disposal, recycling and related activities within unincorporated Newton County and the incorporated municipalities of Covington, Mansfield, Newborn, Oxford, and Porterdale (Exhibit 1-1) for the ten-year period of 2026-2035.

This Plan was prepared under the direction of the Newton County Solid Waste Management Authority (the “Authority”) and its Director of Solid Waste, Matthew Dolan. For further information please contact:

Mr. Matthew Dolan, Director of Solid Waste
Newton County Solid Waste Management Authority
205 Lower River Road
Covington, Georgia 30016
(770) 786-5808

The Authority’s professional engineering and management consultant, Atlantic Coast Consulting, Inc., served as technical advisor and provided project support to the Authority in the preparation of this Plan.

1.2 Scope and Applicability of the Solid Waste Management Plan

The Georgia Comprehensive Solid Waste Management Act (O.C.G.A § 12-8-20 et seq.; the “Act”) requires that each city and county in Georgia develop or be included in a comprehensive solid waste management plan (“SWMP”; O.C.G.A. § 12-8-31.1(a)). The Georgia statute provides that the SWMP shall “at a minimum, provide for the assurance of adequate solid waste handling capability and capacity within the planning area for at least ten years from the date of completion of the plan which shall specifically include an adequate collection and disposal capability; shall enumerate the solid waste handling facilities as to size and type; and shall identify those sites which are not suitable for solid waste handling facilities based on environmental and land use factors” (O.C.G.A. § 12-8-31.1(b)).

This Plan supersedes the “Multi-Jurisdictional Solid Waste Management Plan: Newton County, Georgia and the Cities of Covington, Mansfield, Newborn, Oxford, and Porterdale” adopted by the Newton County Board of Commissioners on April 6, 2010.

This Plan includes summaries of or references to various procedures and requirements under the Act for certain solid waste related activities. Any such summaries or references included in this Plan, however, are not exhaustive and do not include all the procedures and requirements under the Act and its associated regulations that may be applicable to a solid waste activity, solid waste facility, host local government of a facility, or solid waste permit applicant. The Act and its associated regulations and other applicable federal, state, and local law shall govern all solid waste related activities in the State of Georgia and this Plan is subject to such Act, regulations, and law.

1.3 Overview of the Area Covered in the Plan

1.3.1 Planning Area

Newton County (the “County”) is located in north central Georgia in the Piedmont physiographic province approximately 25 miles east of Atlanta (see Exhibit 1-1). According to the U.S. Census Bureau, the County has a land area of approximately 274 square miles and a population density of

Table 1-2. Newton County Population Projections

| Year | Population Projection ⁽²⁾ |
|------|--------------------------------------|
| 2025 | 126,652 |
| 2030 | 138,942 |
| 2035 | 150,442 |

(2) Source - Georgia Governor's Office of Planning and Budget

1.3.3.1 Seasonal Population Variation

The County does not experience a significant seasonal population change. Seasonal population variations are not considered to significantly impact solid waste management within the County.

1.3.3.2 Number of Housing Units and Households

The Atlanta Regional Commission's Newton County Data Profile estimated that as of 2023 the total County population had increased to 115,530 from 96,833 in 2010. Over the same time, there were 42,836 housing units in the County in 2023, up from 37,524 in 2010. While both population and housing units in the County increased; population grew by 19.3% while housing units increased by 14.2%. As a result of population growth outpacing the growth of housing, the percentage of occupied housing units in the County increased from 89.4% in 2010 to 94.6% in 2023. Given the current high percentage of occupied housing, population growth in the County will require new home construction, which could lead to an increase in Construction/Demolition Waste ("C/D Waste") generation.

1.3.4 Economic Activity

The County has a diverse economy. Table 1-3 summarizes economic activity for the County based on non-farm wage and salary employment reported by the Atlanta Regional Commission.

Table 1-3. Employment Sectors in Newton County⁽¹⁾

| Sector | Number of Jobs, 2020 | Number of Jobs, 2050 Forecast |
|--------------------------------------------------------------------------|----------------------|-------------------------------|
| All Sectors | 31,407 | 38,920 |
| Goods Producing | 7,905 | 8,581 |
| Manufacturing | 5,741 | 5,885 |
| Construction | 2,082 | 2,179 |
| Agriculture, forestry, fishing and hunting | 54 | 458 |
| Mining | 28 | 59 |
| Service Providing | 23,502 | 30,339 |
| Education and health services | 7,419 | 8,532 |
| Retail Trade | 4,647 | 4,919 |
| Leisure and hospitality | 2,866 | 4,137 |
| Professional and Business Services | 1,345 | 2,488 |
| Financial activities | 1,719 | 2,471 |
| Administrative and Support and Waste Management and Remediation Services | 1,209 | 1,801 |
| All other service sector jobs | 4,297 | 5,991 |

(1) Source - Atlanta Regional Commission Series 17 Forecasts and County Data Profiles

quantity of waste has slightly declined over this five-year period, with the highest quantities of waste generation occurring at the height of the Covid-19 pandemic in 2020 and 2021. Since these pandemic years, overall waste levels dropped in 2022 but have begun to rise again slowly in 2023 and 2024. Post-pandemic waste generation and disposal remains highly elevated compared to pre-pandemic tonnage (see also Section 5).

2.2 Sources of Waste by Local Government

Disposal data by local government source from the second quarter of 2020 through the second quarter of 2025 is shown in Figure 2-2 and summarized Table 2-2.

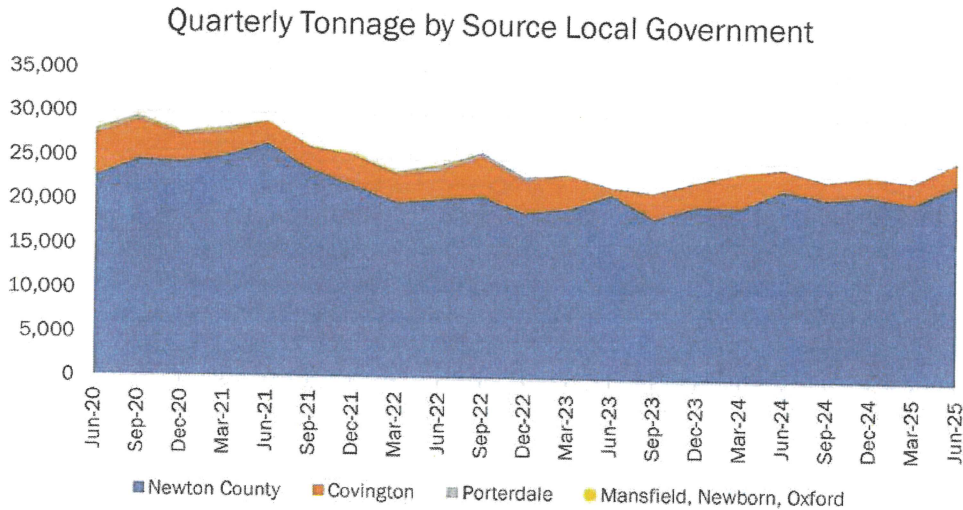


Table 2-2. Lower River Road MSWL – Waste Disposed by Source Local Government (tons / quarter)

| Waste Source | Average Quarterly Tonnage | Avg. % |
|--------------------------------|---------------------------|-------------|
| Newton County | 21,733 | 87.1% |
| Covington | 2,991 | 12.0% |
| Porterdale | 178 | 0.7% |
| Mansfield, Newborn, and Oxford | 45 | 0.2% |
| Total | 108,494 | 100% |

Observing the County's waste generation by local government in Table 2-2 shows that most of the waste collected in the County comes from unincorporated Newton County, at 87.1% of total waste. Covington generates 12.0% of the County-wide total, while Porterdale generates 0.7%. The municipalities of Mansfield, Newborn, and Oxford combine to contribute 0.2% of the County-wide total.

Table 2-4 presents data for per capita waste generation. Table 2-4 shows that the average per capita waste generation during the years 2021-2024 has changed only slightly from that in 2010.

To conclude this section, we determine the total residential waste disposal needs of the County for the planning period of 2026-2035. To do this, we project population for each year of the planning period as described in Section 1.3.3. For each year's projected population, we apply the average per capita waste generation rate of the past four years, 0.82 tons/person/year. Table 2-5 projects waste generation of 105,722 tons in 2026, with waste generation rising with population to a projected value of 123,081 tons of waste in 2035. The total mass of waste generation projected for the planning period is 1,145,373 tons.

Table 2-5. Projected Waste Generation in 10-year Planning Period

| Year | Population Projection | Projected Annual Waste Disposal (tons) |
|-----------|-----------------------|----------------------------------------|
| 2026 | 129,224 | 105,722 |
| 2030 | 138,942 | 113,672 |
| 2035 | 150,442 | 123,081 |
| 2026-2035 | - | 1,145,373 |

2.5 Needs and Goals

The County could benefit from better tracking of the sources of incoming waste at the Landfill. Waste reduction efforts will be difficult to assess, and it will be more difficult to target areas for improving waste reduction, if the sources of waste generation are not accurately known.

SECTION 3: WASTE REDUCTION ELEMENT

3.1 Inventory of Waste Reduction Programs

3.1.1 Source Reduction

Source reduction consists of activities that prevent the generation of waste at the source. For example, certain commercial and industrial entities may promote programs such as paperless communications and electronic filing systems to reduce the generation of waste. As another example, individuals may contribute to source reduction in numerous ways, such as when selecting reusable products over disposable counterparts.

The County has not inventoried source reduction and reuse programs, which are inherently difficult to quantify, but promotes source reduction through a variety of means. Keep Newton Beautiful ("KNB") provides community environmental education that includes an emphasis on source reduction of waste.

3.1.2 Recycling

The County's solid waste management programs include recycling. Local government recycling programs are briefly described below.

Newton County Drop-off Recycling Program

The Authority owns and operates a drop-off recycling program that includes the Landfill and six Convenience & Recycling Centers located throughout the County (see Exhibit 3-1). The Convenience &

City of Porterdale Curbside Recycling Program

Porterdale currently does not offer a recycling collection service. Citizens of Porterdale may use the County Convenience & Recycling Centers and the recycling services offered at the Landfill (see above).

Within the County there are numerous viable, competitive, recycling businesses that privately divert waste from disposal. A complete listing of private recycling facilities is difficult to obtain because they do not have to obtain solid waste handling permits. Some of these businesses located in the County are:

- JFL Environmental
- LB Recycling
- Oconee Metal Recovery

Data on material diversion rates from these private sector entities is not available to the County. Other private sector recycling collection locations include grocery stores, home improvement centers, and other businesses that provide recycling for specific materials. These businesses, and others like them, accomplish recycling privately on a sustainable, commercially viable basis at no cost to the County or local municipalities.

3.1.3 Yard Trimmings Programs and Facilities

The County collected an average of 4,074 tons per year of yard trimmings from 2020 through 2024 (see Table 2-1). By state law, yard waste disposal in lined MSW landfills is forbidden, because lined disposal space is considered too valuable for storage of this low-impact waste stream. The County operates a Class 1 Composting facility at the Landfill to process yard waste into mulch.

The United States Environmental Protection Agency estimates that in 2018, 4 percent of municipal solid waste generated in the U.S., prior to materials recovery or combustion, was yard waste (USEPA, Municipal Solid Waste in the United States: Facts and Figures based on 2018 data). Table 2-1 shows that yard waste in the County is almost exactly the percentage found in EPA's study. The County continues to investigate long-term options for management of source-separated yard waste, including beneficial use, production of mulch, land application, inert landfill disposal and composting. Composting at the Landfill is currently limited to using yard waste as a feedstock, but an application to modify the existing solid waste handling permit to allow composting of food waste and biosolids from wastewater treatment is currently under review by the Environmental Protection Division of the Georgia Department of Natural Resources ("Georgia EPD"). Yard waste and other woody waste will be needed as a carbon-source to be blended with more nitrogen-rich feedstocks such as food waste and biosolids.

3.1.4 Electronics and Lead Acid Batteries

Household electronics are accepted for recycling at the Landfill on the first Saturday of each month from 8 a.m. to Noon. Televisions are currently not being accepted.

Used lead acid batteries used in most traditional gasoline- or diesel-powered automobiles are collected upon purchase of a replacement battery. Lead acid and other types of batteries are accepted for recycling at Batteries Plus at 12601 Town Center Drive in Covington. These battery recycling programs are privately operated and not affiliated with the County.

3.2 Needs and Goals

residents can take waste or recyclables. The cities of Covington, Mansfield, Oxford, and Porterdale have provided waste collection services since the 1970's. Private haulers provide supplemental waste collection services and collect waste from residents or businesses who have chosen to utilize private services. Public and private haulers identified by Georgia EPD as being located in the County are identified in Table 4-1.

Table 4-1. Waste Collections Located in Newton County

| Provider Name | Address | Sectors Served ⁽¹⁾ | Jurisdiction(s) Served | Arrangement |
|-----------------------------------------|-------------------------------|-------------------------------|------------------------|-------------------------------------------------------------------|
| Newton County Solid Waste Authority | See Table 4-2 and Exhibit 3-1 | R | Countywide | Six Recycling and Convenience Centers |
| City of Covington Sanitation Department | | R, C | City of Covington | Offered by Ordinance as a City Service |
| City of Mansfield | | R | City of Mansfield | Offered by Ordinance as a City Service |
| Town of Newborn | | R, C | Town of Newborn | Residents utilize convenience centers or private haulers |
| City of Oxford Sanitation Department | | R, C | City of Oxford | Offered by Ordinance as a City Service |
| City of Porterdale | | R, C | City of Porterdale | Offered by Ordinance as a City Service |
| Private Haulers | | R, C | Countywide | Offered through contracted services with residences or businesses |

- (1) R=Residential; C=Commercial; C/D= Construction/Demolition
 (2) Source: EPD listing of Solid Waste Collection Operations

Table 4-2. Residential Waste Convenience Center Locations

| Drop-off Site | Address |
|---------------------------------|--------------------------------------------|
| Adams Circle Convenience Center | 2010 Adams Circle Covington, GA 30014 |
| Bypass Convenience Center | 11575 Covington Bypass Covington, GA 30014 |
| Oak Hill Convenience Center | 112 Oak Hill Road Covington, GA 30016 |
| Piper Road Convenience Center | 10545 Highway 36 Covington, GA 30014 |
| Stewart Convenience Center | 14645 Highway 36 Covington, GA 30014 |
| Stone Road Convenience Center | 14645 Highway 36 Covington, GA 30014 |

Residential Waste

The Authority-operated convenience centers listed in Table 4-2 allow residents to drop off household waste and some bulky waste items, with restrictions given below. The Authority maintains a webpage dedicated to giving current information on the Convenience and Recycling Centers at

Bulk Items and Tires

The Landfill accepts many types of bulk items, including furniture and old appliances. Passenger and oversized scrap tires are accepted at the Landfill, with the Authority maintaining contracted services for processing of tires.

Municipal bulk waste programs are summarized below:

- The City of Covington provides household collection of up to two bulk waste items per week; this includes televisions, computers, furniture, and some appliances, but does not include C/D Waste. Refrigerators or freezers may only be accepted with doors removed and attached certification tags documenting that refrigerants have been removed. Tires are not included in this collection program. A description of Covington’s bulk waste collections is available online; the current version as of this writing is here:
https://cityofcovington.org/ckeditorfiles/files/2024_SanitationInfoFlyerREVISED.pdf
- The City of Mansfield’s collection program does not include bulk waste or tires.
- The Town of Newborn does not offer bulk waste or tire collection services.
- The City of Oxford does not collect bulk waste or tires; if an object is not than household garbage, yard waste, or recyclable, it falls into the City ordinance’s definition of “other refuse and trash” and is not handled by City collections.
- The City of Porterdale updated its bulk waste collection policy in January, 2025. The City collects many types of bulk waste, with types of waste and rates posted at:
<https://www.cityofporterdale.com/media/1681>

To apply for and schedule bulk waste removal, Porterdale residents must complete the application form found at:

<https://www.cityofporterdale.com/media/1511>

Table 4-2. Other Waste Collection Programs in Newton County

| Type | Program Description |
|-----------------------------------------------------------|-------------------------------------------------------------------------------------------------------------------------------------------------------------------|
| Private Collection of Commercial or Residential C/D Waste | Private haulers provide C/D Waste collection throughout the County, under individual and undisclosed terms and conditions between the haulers and the generators. |
| Municipal Collection of Residential C/D Waste | Neither the County nor any of the municipalities offer collection of Residential C/D Waste from home construction, demolition, or remodeling. |

4.1.2 Contingency Strategy

The waste collection programs in the County are a blend of Authority-operated convenience centers, municipally owned or contracted curbside collection, and privately contracted collections. Because collection services are offered by the Authority, the municipalities, as well as multiple private haulers, it is unlikely that all collection options would be simultaneously interrupted. Should any collection services be interrupted, that provider could temporarily contract private haulers within the County, or even within neighboring counties. The six convenience centers provide redundancy within the system should any single service or convenience center be temporarily unavailable. Use of the Authority convenience centers could be implemented immediately as a contingent collection option for the

municipalities intend to maintain an adequate, cost-effective collection infrastructure to collect all residential waste. To meet this goal, the Authority will:

- Monitor population growth and waste projections to ensure the collection infrastructure will continue to meet the needs of the County and the municipalities.
- Work with Newton County Code Enforcement to enforce illegal dumping and littering ordinances.

SECTION 5: DISPOSAL ELEMENT

5.1 Inventory of Solid Waste Disposal Facilities

Exhibit 5-1 shows facilities with active solid waste handling permits from Georgia EPD's Solid Waste Management Program's list of regulated solid waste facilities, last compiled December 2024. The five facilities within the County include the Landfill and the City of Covington Transfer Station.

Two privately-owned transfer stations are located within the County: Harris Transfer Station, Inc. and GGMLT, LLC dba LB Recycling. A privately-owned processing facility in Oxford, Farmer Oil, Inc., is permitted to collect and process used oil. These private facilities are included in Exhibit 5-1 for completeness, but are not discussed further in this Plan.

The County relies on the Landfill for disposal of residential and commercial waste generated within the County. Figure 5-1 shows the annual tonnage disposed at the Landfill since 2003.

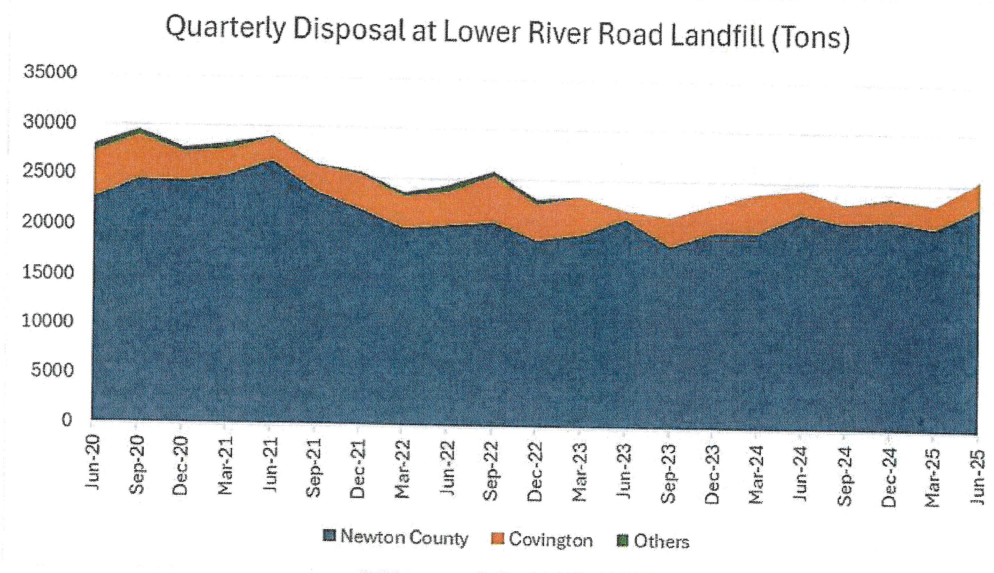
5.2 History of Waste Disposal and Generation

Most of the waste generated within the County is disposed of in the Landfill. The Landfill does not accept out-of-County waste for disposal, but some C/D Waste, commercial waste, and industrial waste may be exported from the County to other disposal or processing sites.

5.2.1 Waste Quantity and Characterization

By regulation, all landfills in Georgia must report quarterly the tonnage disposed. Georgia EPD posts reported tonnage for Georgia landfills on its website. Figure 5-1 shows the tonnage reported at the Landfill since 2003. In some years (2003-2007, in particular) tonnage at the Landfill was reported separately for MSW cells and C/D Waste cells; in those years, the combined tonnage is shown in Figure 5-1.

Figure 5-2. Lower River Road Landfill Quarterly Disposal



The Remaining Capacity Report (“RCR”) for the Landfill submitted to Georgia EPD in September, 2025 is used to assess whether there is sufficient capacity in the Landfill for the planning period covered by this Plan. This most recent RCR was based on a survey of the Landfill conducted on June 26, 2025, which estimated a remaining waste volume of 7,082,688 cubic yards. The RCR estimates that landfilled waste is compacted to a density of 0.52 tons/cubic yard. Using that density, the Landfill has capacity for an additional 3.7 million tons of waste, which greatly exceeds the projected tonnage for the planning period. As a required component of this Plan, the Authority has provided a letter assuring that the Landfill has capacity for the projected amount of waste to be disposed (Appendix I).

5.2.1 Assurance of 10-Year Capacity

The Landfill has sufficient capacity to handle the projected amount of residential waste collected by the County over the ten-year planning period. Appendix I contains a letter from the Authority’s Director of Solid Waste assuring the capacity of the Landfill to provide disposal capacity during the planning period.

5.2.2 Contingency Strategy

In the highly unlikely event that the Landfill is not available to the County during the 10-year planning period, the County would dispose of waste at a private landfill under future contractual arrangements. The County estimates this contingency strategy could be in effect within two to five business days of being needed.

5.3 Assessment of Disposal

The County relies on the Landfill for disposal of its residential waste. The Landfill has adequate capacity for disposal of County-wide waste for the ten-year planning period. The County has submitted an application to Georgia EPD for a major modification to the Landfill’s solid waste handling permit.

a determination from the host local government that the proposed facility is consistent with this Plan (see Section 6.2).

6.1.2 Environmental Limitations in Local Zoning

The Newton County Unified Development Ordinance includes many provisions which limit the siting of solid waste facilities. Most types of solid waste facilities are required to be zoned M1 or M2 (Light Industrial or Heavy Industrial, respectively). Exhibit 6-1 shows the areas within the County zoned M1 or M2. For siting solid waste facilities, this Ordinance:

- Lists the Yellow River, South River, and Alcovy River as Protected River Corridors. Solid waste landfills are prohibited within these protected river corridors.
- Creates a Groundwater Recharge Area Overlay District. Development restrictions within this District include a requirement for all new sanitary landfills within this Overlay District to have synthetic liners and leachate collection systems.
- Includes a Wetlands Protection Overlay District. Development restrictions within this District include prohibitions against receiving toxic or hazardous waste or other contaminants, and a prohibition on sanitary waste landfills.

In addition to the restrictions from zoning ordinances, this Plan includes additional environmental limitations that are listed below.

6.1.3 Additional Environmental Limitations for All Solid Waste Facilities

In addition to the restrictions from zoning ordinances, this Plan extends the environmental limitations of the previous SWMP that are listed below.

Water Supply Watersheds

The following criteria exist to prevent proposed solid waste management facilities or proposed expansion of existing facilities from negatively impacting water supply watersheds.

- A. Within a seven-mile radius of a public water intake, no solid waste management facility shall be constructed within a 200-foot buffer on both sides of a perennial stream. No impervious surfaces associated with such facilities shall be constructed within 300 feet of either side of the stream.
- B. In small supply watersheds (less than 100 square miles), outside of the seven mile radius discussed in (A) above, no solid waste management facility shall be constructed within a 100-foot buffer on both sides of a perennial stream. No impervious surfaces associated with such facilities shall be constructed within 150 feet of either side of the stream.
- C. No solid waste management facilities shall be located in a 500-foot buffer around water supply reservoirs.
- D. Any landfill located entirely or within a portion of a small water supply watershed must have a composite liner and leachate collection system, with the bottom of the liner system being a minimum of five feet above the seasonal-high water table.
- E. No solid waste landfill or Class 4 composting facility shall be located within two miles of any surface water intake point.

Groundwater Recharge Areas

No solid waste management facilities shall be located in a significant groundwater recharge area shown on the Georgia Hydrogeological Atlas. No solid waste landfills shall be located within three miles

6.1.6 Land Use Limitations

Zoning Limitations

The Newton County Unified Development Ordinance sets standards for the location of solid waste facilities within the County. Most types of solid waste facilities are required to be zoned M1 or M2 (Light Industrial or Heavy Industrial, respectively). Exhibit 6-1 shows the areas within the County zoned M1 or M2. A new composting facility or privately owned landfill is required to be zoned M2 and obtain a Conditional Use Permit. A scrap tire processing facility must be zoned either M1 or M2, with the former zoning class also requiring a Conditional Use Permit. Facilities dedicated to recycling or recovered materials processing can only be located in areas zoned M1 or M2. A solid waste transfer station may be located in areas zoned M1, M2, CH, or CG, though the latter two designations also require a Conditional Use Permit.

6.2 Local Procedures for Siting Solid Waste Facilities

Host local governments of solid waste facilities and applicants for permits to construct, operate, or make a major modification of a solid waste facility shall comply with the applicable permitting and public meeting procedures and requirements of O.C.G.A. §§ 12-8-24 and 12-8-26 and the regulations promulgated thereunder. As noted in Section 1.2 of this Plan, the summary of procedures and requirements provided herein is not exhaustive and does not include all the procedures and requirements that may be applicable to the host local government or the permit applicant. The Act, its associated regulations, and other applicable law shall govern such procedures and requirements.

For any new solid waste facility permit or a major modification of an existing solid waste facility permit, a public hearing shall be held by the governing authority of the county or municipality in which the municipal solid waste facility requesting the modification is located (i.e., the host local government) not less than two weeks prior to the issuance of any permit and notice of such hearing shall be posted at the site of such facility and advertised in a newspaper of general circulation serving the county in which such facility is located at least 30 days prior to such hearing (see O.C.G.A. § 12-8-24(d) and (e)(2)).

Any applicant for a solid waste facility permit or a major modification of an existing solid waste facility permit shall submit to the Georgia EPD written verification from an authorized official of the host local government of the facility that:

- Identifies the type of facility or proposed facility;
- Describes the location of such facility or proposed facility by tax parcel identification number or legal description;
- Expressly states that the facility or proposed facility complies with local zoning or land use ordinances or that there are no such local zoning or land use ordinances; and
- States that the facility or proposed facility is consistent with the local, multijurisdictional, or regional SWMP developed and adopted by the host local government (see O.C.G.A. § 12-8-24(g)).

As required under O.C.G.A. § 12-8-26(b), before a host local government can provide such written verification with respect to the consistency of the proposed new or modified existing facility with the SWMP and local zoning or land use ordinances, the governing authority of the host local government shall comply with the notice and meeting requirements set forth in Part 1 of the Act. Prior to issuing written verification, such governing authority shall cause a notice of the meeting at which the public

- B. If the written report of facility consistency indicates that the facility is a new facility or a major modification expanding the permit boundaries of an existing facility, the host local government will satisfy the public meeting requirements regarding Plan consistency under O.C.G.A. § 12-8-26(b). The host local government may request the Authority to review in an advisory capacity the applicant's written report and the comments from the public meeting regarding the proposed facility's (or facility expansion's) consistency with this Plan.

The governing body of the host local government of the proposed facility or facility expansion shall review the applicant's written statement and public input to determine whether the proposed new or modified facility is consistent with this Plan. Within 30 days of making its determination regarding Plan consistency, the governing body shall notify the facility permit applicant and provide either the letter of consistency or a notice of deficiencies. The applicant may choose to address the deficiencies and may go through the process again, including resubmittal of the written report of facility consistency and another public hearing held by the host local government.

6.3 Needs and Goals

The goal of this section is to list additional local environmental and land use restrictions that will impact the siting of proposed solid waste facilities or the expansion of existing facilities. This section also details the process that proposed solid waste handling facilities and proposed expansions of existing facilities must follow to be evaluated for consistency with this Plan.

SECTION 7: EDUCATION AND PUBLIC INVOLVEMENT

7.1 Inventory Existing Public Education Programs and Public Involvement Opportunities

Keep Newton Beautiful ("KNB") is an organization dedicated to fostering cleaner, greener, and more sustainable communities throughout the County. KNB plays a vital role in both public education and public involvement through a variety of programs and initiatives designed to engage residents in environmental stewardship and community improvement. These initiatives are explained in greater detail below.

Public Education:

1. Awareness Campaigns: KNB conducts public awareness campaigns aimed at educating residents about the importance of proper waste disposal, recycling, and environmental conservation. These campaigns often include advertisements, social media posts, and educational materials distributed to local schools, businesses, and community groups.
2. Workshops and Presentations: KNB offers workshops, seminars, and presentations to schools, businesses, and civic groups to educate the public on recycling, litter prevention, and sustainable living. These educational programs empower attendees to make environmentally conscious decisions in their daily lives and raise awareness about KNB's goals.
3. Collaborations with Schools: KNB partners with local schools and universities to engage and teach students about the impact of littering and waste, recycling practices, and the benefits of keeping the community clean. These outreach programs reach a range of students from K-12 to higher education. In the past year, KNB has given presentations at local elementary schools and summer camps, and attended events at Oxford College and the GSU Newton Campus.
4. Printed Resources & Online Content: The organization provides access to educational brochures, flyers, and online resources that explain local environmental issues, tips for reducing waste, and how individuals can contribute to a cleaner environment.

7.3 Statement of Needs and Goals

The County's goal is to educate the public on the County's solid waste management program and to maximize diversion of waste from disposal through increased recycling efforts. The County will continue to use its website and other means to provide the information needed to properly participate in the current collection and recycling programs, and to communicate any future changes to these programs. The County will explore opportunities to expand its outreach and to provide new waste diversion services, such as household hazardous waste collection events.

SECTION 8: IMPLEMENTATION STRATEGY

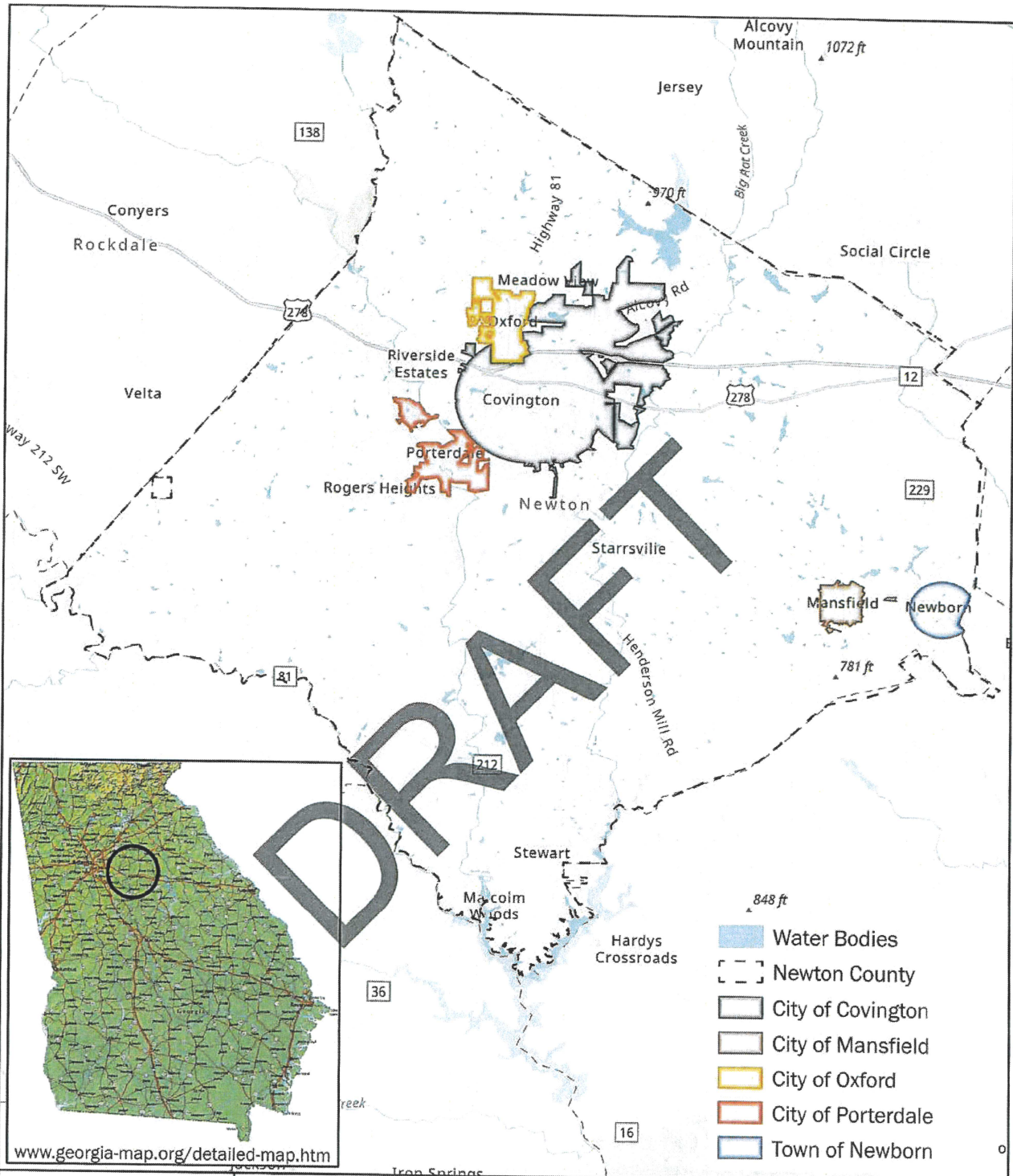
8.1 Summary of Goals and Needs

Table 8-1 summarizes the County's goals and needs. The Authority's next Strategic Plan will seek to identify which goals listed below are priorities and achievable components of its mission statement for the next planning period, and which goals require further development and planning and are more appropriate for a longer-term vision statement.

Table 8-1. Summary of Goals

| Element | Description of Goal |
|-----------------|-----------------------------------------------------------------------------------------------------------------------------------------------------------------------------------------------------------------------------------------------------------------------------------------------------------------------------------------------------------------------------------------------------------------------------------------------------------------------------------------------------------------------------------------------------------------------------------------------------------------------------------------------------------------------|
| Waste Reduction | The County has enhanced diversion of the amount of waste disposed at the Landfill through management of source-separated yard waste, continued expansion of the current drop-off recycling program, and special recycling event partnerships. The County will explore efforts to expand its curbside collections to include recycling programs. A continued emphasis on public education addressing waste reduction, reuse, and recycling will remain a major component of waste reduction strategies implemented. The County will explore emphasis on waste-to-energy alternatives and will monitor new developments in this field for implementation in the future. |
| Collection | The County intends to maintain an adequate, cost-effective collection infrastructure. The County will: <ul style="list-style-type: none"> • Monitor population and waste projections to ensure the collection infrastructure will continue to meet the County's needs. • Ensure the collection infrastructure is adequately maintained and funded, including municipal collection vehicles and equipment and the citizen convenience centers. • Ensure illegal dumping and littering ordinances are enforced. |
| Disposal | The County's goal is to ensure the Landfill provides adequate disposal capacity over the ten-year planning period. The strategy to meet this goal includes: <ul style="list-style-type: none"> • Completing ongoing permitting for the vertical expansion of the Landfill. |

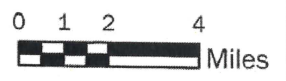
DRAFT

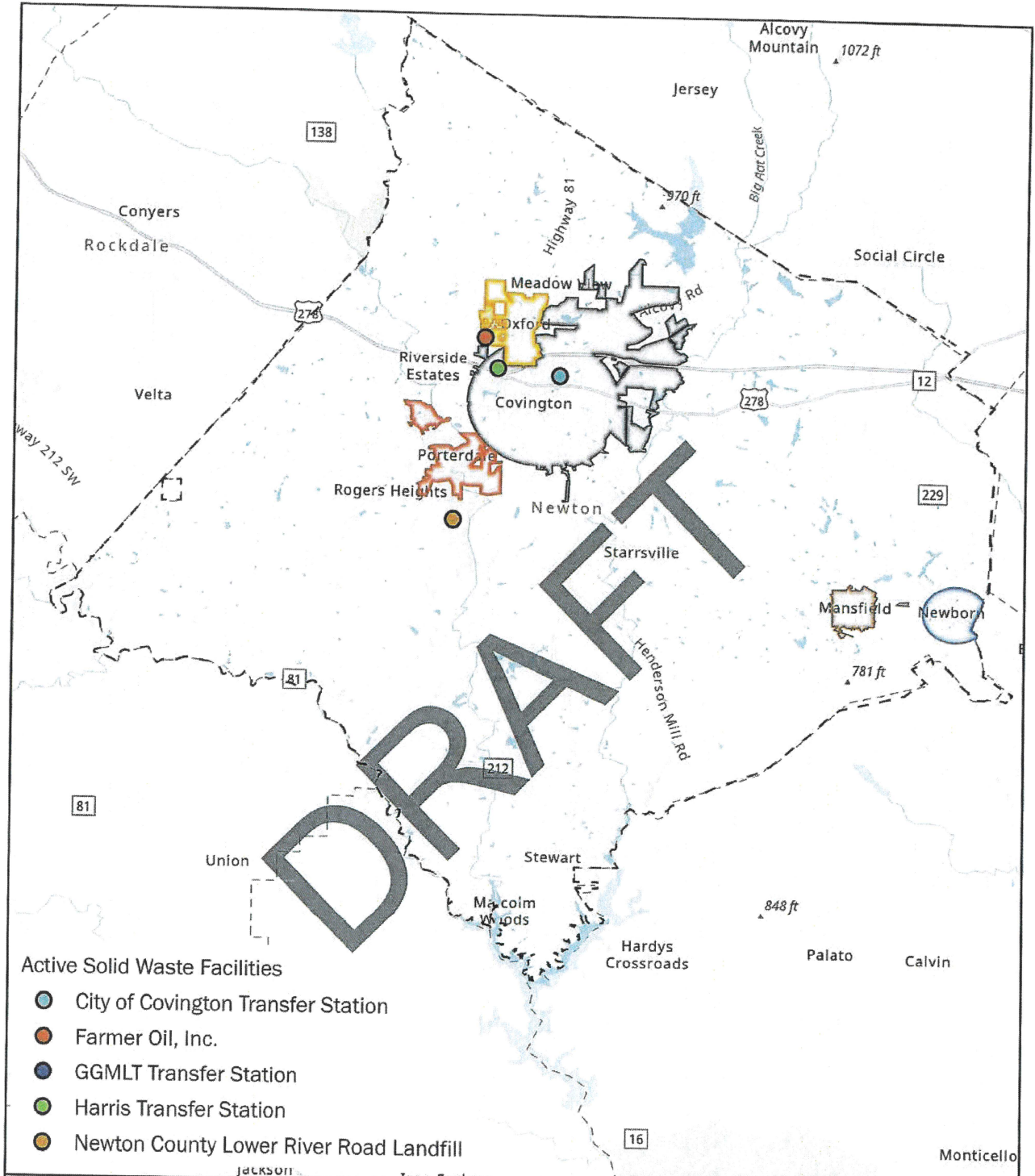


10-YEAR SOLID WASTE MANAGEMENT PLAN
LOCATION MAP

Drawn By: DAS Date: 02/10/26

EXHIBIT
1-1





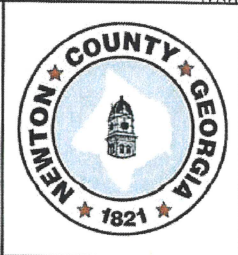
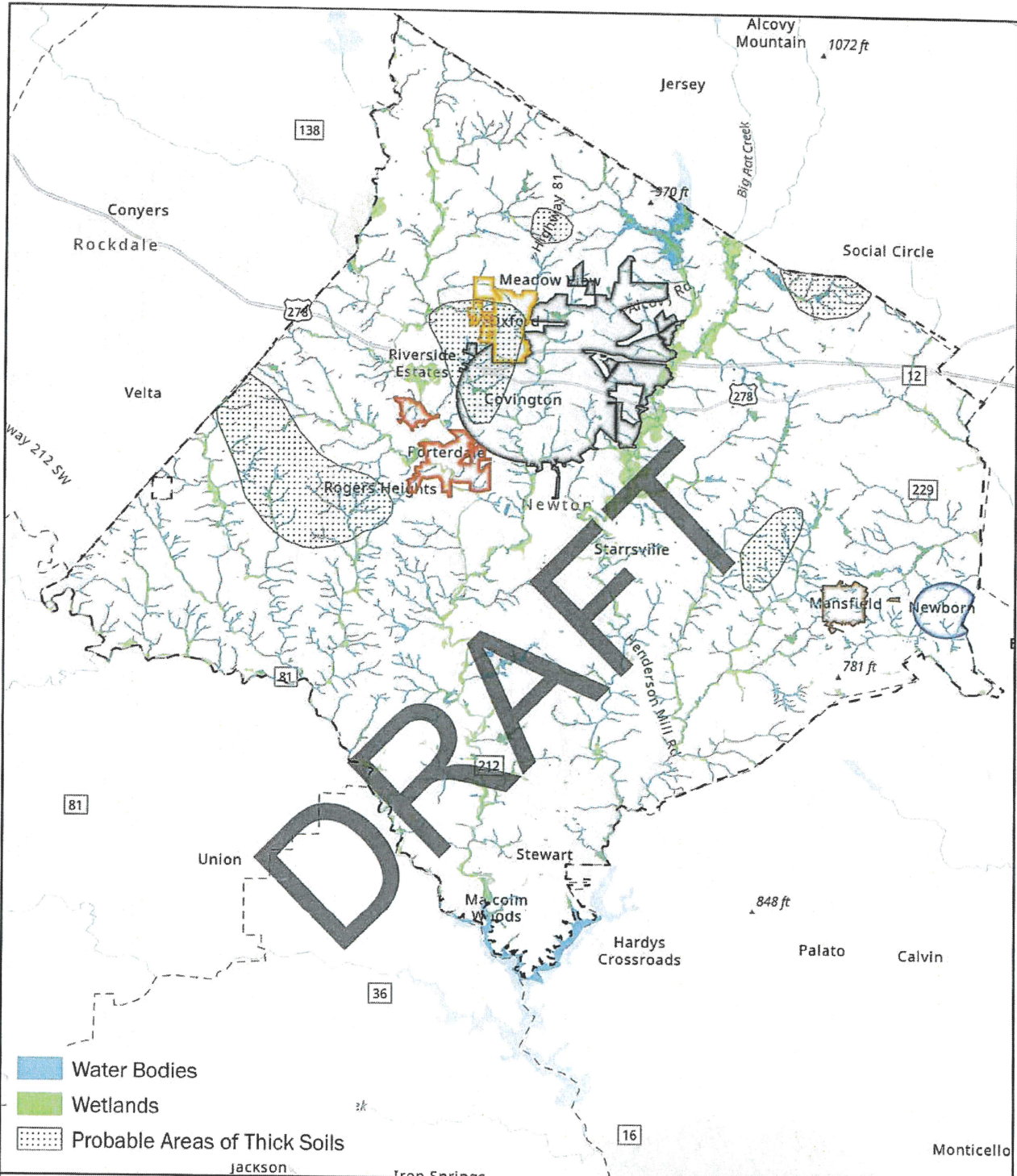
- Active Solid Waste Facilities
- City of Covington Transfer Station
 - Farmer Oil, Inc.
 - GGMLT Transfer Station
 - Harris Transfer Station
 - Newton County Lower River Road Landfill



10-YEAR SOLID WASTE MANAGEMENT PLAN
ACTIVE SOLID WASTE FACILITIES

Drawn By: DAS Date: 02/10/26

| | |
|---------|-------|
| EXHIBIT | N |
| 5-1 | |
| | |



10-YEAR SOLID WASTE MANAGEMENT PLAN
GROUNDWATER RECHARGE, HYDROLOGY, & WETLANDS
Drawn By: DAS Date: 02/10/26

EXHIBIT
6-2

0 1 2 4 Miles

N